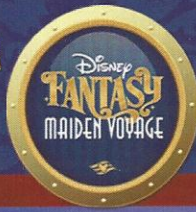


PERSONAL NAVIGATOR



WEDNESDAY, APRIL 4, 2012

Sunrise: 6:40 a.m. Sunset: 7:04 p.m.

Evening Attire: Cruise Casual

All Ashore: Approx. 7:30 am

All Aboard: 2:30 pm

Wednesday: Partly Sunny High: 84°F/29°C

Thursday: Partly Sunny High: 82°F/28°C

COSTA MAYA

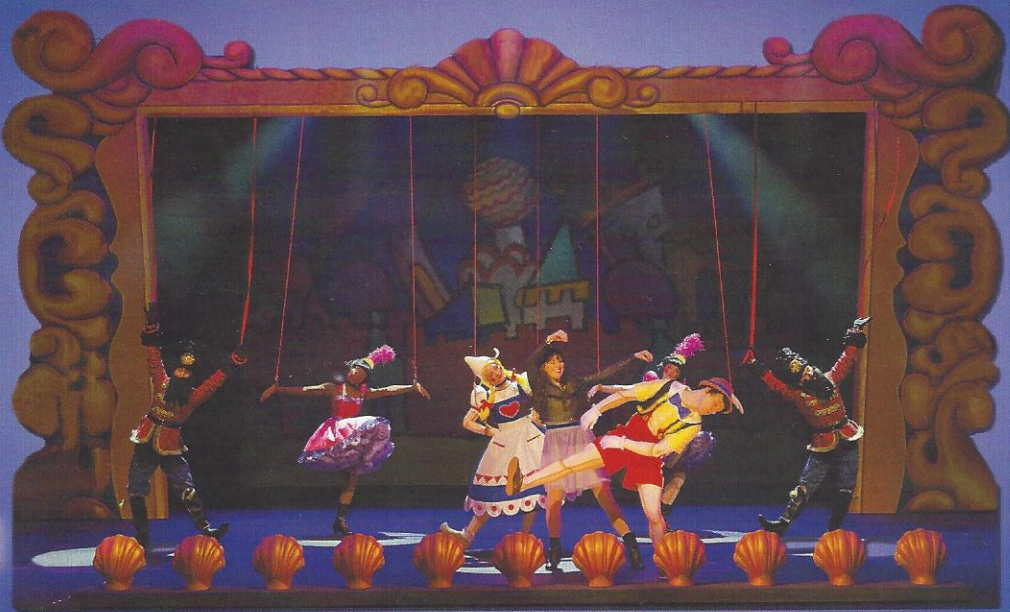


On the eve of their graduation, three best friends go on a magical journey down the wishing well. A host of Disney characters help them discover the connection between children who are becoming adults, and adults who stay in touch with being a kid at heart.

**Walt Disney Theatre
Decks 3 & 4, Forward
6:15 p.m. & 8:30 p.m.**



Assistance available at the entrance to the Walt Disney Theatre 30 minutes prior to show time.



Costa Maya Port Information

Costa Maya is a tourist region located on the Yucatán Peninsula 100 miles south of Playa del Carmen near the border of Belize in Mexico. Comprised of 2 small villages, Mahahual and Xcalak, Costa Maya provides a picture-perfect getaway the entire family is sure to love.

Early Mayans were predominant in the area from 200 B.C. to 900 A.D. In the 16th century, English pirates ravaged the coast and battled the Spanish for control of the region. At the end of the 19th century, the Mexican Navy took over the land. A treaty with Britain was signed soon after limiting the territorial rights of Mexico, thereby forcing Mexico to build a new trade port in Xcalak.

By the 1950's, the economy was flourishing as businesses - including stone and wood construction companies - made the area a supply center for the region. Steady growth continued until the mid-1990's when the government outlined a plan to make Costa Maya a tourist destination. Today, tourism is Costa Maya's main economic revenue stream and it's easy to understand why, thanks to the island's plethora of unspoiled natural beauty that has remained untouched for thousands of years.

DOCKING

The ship will dock at the Puerto Costa Maya, located approximately 1/2 mile north of Mahahual.



FAMILY CABARET

Featuring the Comedy and Ventriloquism of Taylor Mason as he entertains the entire family in this cabaret style show.

**7:30 p.m.
The Tube, Deck 4, Aft**

Don't Miss:

\$5,000 Mega Jackpot Bingo

3:30 p.m., D Lounge, Deck 4, Midship

It's big, it's massive, it's supersized. It's \$5,000 MEGA jackpot bingo! Take home \$5,000 if you can cover your card in 46 numbers or less. If not, we carry on to play for the biggest cash prize of the session.

Card Pre Sales start at 3:30 p.m.

First game starts at 3:45 p.m.

Saludos Amigos Fiesta

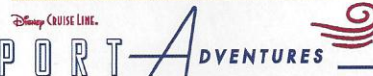
10:15 p.m., D Lounge, Deck 4, Midship

Bring the family out to this interactive dance party featuring The Three Amigos. We will party with Donald Duck, learn Salsa, Meringue and have a Latin good time!



TIME ZONE CHANGE

Remember to turn your clocks **FORWARD 1 HOUR** upon retiring on **WEDNESDAY** evening, or first thing **THURSDAY** morning.



Please check your tour tickets for meeting times and locations. Visit the Port Adventures Desk, Deck 5, Midship for any questions.

DINNER MENU

Animator's Palate: Prince & Princess Menu
Enchanted Garden: Prince & Princess Menu
Royal Court: Prince & Princess Menu

DRINK OF THE DAY

Key Lime Margarita (Alcoholic)
Cranberry No-Jito (Non Alcoholic)

IMPORTANT NUMBERS

Fire/Security: 7-3001
Medical Emergency: 7-3000
Health Center: 7-1923

FAMILY ACTIVITY HIGHLIGHTS

DISNEY ANIMATION: ILLUSION OF LIFE: PERSISTENCE OF VISION

D Lounge, Deck 4, Midship - 1:00 p.m.

Go behind the scenes at Walt Disney Animation Studios and learn the principles that make animation work, and try your hand at creating your own easy animation demonstration in this fun and fascinating enrichment program.

MICKEY 200

The Tube, Deck 4, Aft - 1:45 p.m. (Limited Availability)

Don't eat your vegetables... race them in this wild and wacky charge to the finish line. May the best veggie win!

CONVERSATION WITH JOE LANZISERO

Buena Vista Theatre, Decks 4 & 5, Forward - 3:00 p.m.

Join Joe Lanzisero, Senior Vice President for Walt Disney Imagineering Creative, for an informal, behind the scenes presentation and discussion that looks at the creative process of the making of the Disney Fantasy. This presentation will be repeated on Channel 23.

DISNEY VACATION CLUB® GROUP PRESENTATION

The Tube, Deck 4, Aft - 4:00 p.m.

Want to learn more about taking magical vacations year after year? Stop by our interactive group presentation to find out more information from a Disney Vacation Club representative.

FAMILY CABARET: TAYLOR MASON

The Tube, Deck 4, Aft - 7:30 p.m.

Featuring the Comedy and Ventriloquism of Taylor Mason as he entertains the entire family in this cabaret style show.

OFFICER PIN TRADING

Lobby Atrium, Deck 3, Midship - 7:30 p.m.

Come trade pins with the officers of the Disney Fantasy.

FAMILY KARAOKE

D Lounge, Deck 4, Midship - 9:30 & 10:45 p.m.

Join your Cruise Staff in D Lounge tonight and sing along to your favorite song - fun for everyone.



SALUDOS AMIGOS FIESTA

D Lounge, Deck 4, Midship - 10:15 p.m.

Bring the family out to this interactive dance party featuring The Three Amigos. We will party with Donald Duck, learn Salsa, Meringue and have a Latin good time!

ADULT ACTIVITY HIGHLIGHTS

SENSES SPA SEMINARS

Sunrise Stretch - Senses Fitness Center, 7:00 a.m.

Fab Abs - Senses Fitness Center, 7:30 a.m.

Pathway to Yoga - Senses Fitness Center, 8:00 a.m.

Body Sculpt Boot Camp (Fee Applies) - Senses Fitness Center, 9:00 a.m.

Fitness Frenzy (13-17yrs) - Senses Fitness Center, 10:00 a.m.

Facial Workshop - O'Gills Pub, 2:00 p.m.

Seminar: Acupuncture for Pain Management - Senses Spa & Salon, 3:00 p.m.

Power Stretch - Senses Fitness Center, 4:00 p.m.

Seminar: How To Increase Your Metabolism - Senses Spa & Salon, 4:00 p.m.



ANYONE CAN COOK

D Lounge, Deck 4, Midship - 2:30 p.m.

From our galley to yours; join our chefs as they show you how to prepare delicious dishes. Today's menu: Sea Bass.



ST. PADDY'S CELEBRATION

O'Gills Pub, Deck 4, Aft - 7:30 p.m.

Join us as we celebrate St. Patrick's Day all over again! With live music from Rob Thompson and drinks specials from 7:30 - 8:30 p.m.!

LIVE MUSIC WITH "THE DREAMERS"

La Piazza, Deck 4, Aft - 7:30, 9:45 & 11:00 p.m.

Join "The Dreamers", as they play live for your listening pleasure in La Piazza this evening.



MATCH YOUR MATE

The Tube, Deck 4, Aft - 10:15 p.m.

It's time to play everyone's favorite couple's game show - Match your Mate!

LONDON ROCKS

The Tube, Deck 4, Aft - 10:45 p.m.

Hop onboard and hit the dance floor as we take you on a ride through the charts, partying it up to some of the hottest British hits! With a special performance by the Walt Disney Theatre Performers.



\$5,000 MEGA JACKPOT BINGO

D Lounge, Deck 4, Midship

Card Sales - 3:30 p.m. Game Starts - 3:45 p.m.

It's big, it's massive, it's supersized. It's \$5,000 MEGA jackpot bingo! Take home \$5,000 if you can cover your card in 46 numbers or less. If not, we carry on to play for the biggest cash prize of the session.

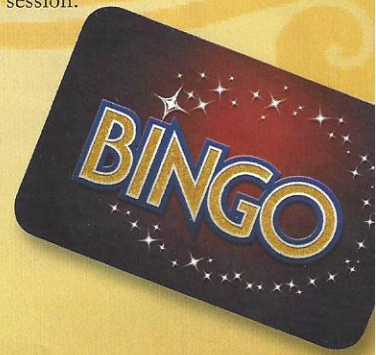
DOUBLE-UP JACKPOT BINGO

**D Lounge,
Deck 4, Midship**

Card Sales - 7:15 p.m.

Game Starts - 7:30 p.m.

Special double-up session: All electronic cards purchased will be doubled. The snowball jackpot continues to grow and could be won today!



YOUTH ACTIVITIES HIGHLIGHTS

DINE & PLAY

A convenience for families dining at 8:15 p.m., our Youth Activities Counselors will be available at 9:15 p.m. at the entrance of Royal Court, Enchanted Garden and Animator's Palate dining rooms to bring registered children to join the fun in the Youth Activity areas.



Deck 5 Midship (7-1440) 9:00 a.m. - 11:00 p.m.

ONCE UPON A TIME

4:00 p.m.

Join Beverly the Bookmaker for a magical, musical story time featuring a Disney Princess!

PLUTO'S PJ PARTY

8:15 p.m.

Bring the little ones in their pajamas but there will be anything but sleep when Pluto and friends host the ultimate slumber party!



Deck 5 Midship (7-1445) 7:00 a.m. - 12:00 Mid.

SUPER SLOPPY SCIENCE - EGGSPERIMENTS

9:30 a.m.

Join Professor Make-O-Mess in some of the most extreme experiments you will ever see in the world of Super Sloppy Science!

MAGIC PLAYFLOOR

1:15 p.m.

Have fun and explore the latest technology of the Magic Playfloor!

ANYONE CAN COOK - CUPCAKES

7:00 p.m.

Anyone can cook as we work together to create some of our favorite treats.

GET THE HOOK

9:30 p.m.

A villainous villain has stolen Captain Hook's prized golden hook. Become a member of the Top Deck Detective Agency and help solve the clue's to retrieve Hook's hook.



Deck 13 Midship (41-14426) 10:00 a.m. - 1:00 a.m.

ANYONE CAN COOK - PIZZA

2:30 p.m.

Anyone can cook as we work together to create some of our favorite treats.

THAT'S HILARIOUS

9:30 p.m.

A game of quick wit and improvisation where you become the star of the show. Work with your fellow cruisers to perform sketches and applaud loudly as you each have the chance to perform to a live audience.



Entrance on Deck 4 Forward (7-9418)

12:00 p.m. - 2:00 a.m.

DISNEY ANIMATION: ILLUSION OF LIFE - CARTOON PHYSICS

3:00 p.m.

Go behind the scenes at Walt Disney Animation Studios and see how flat drawings and pencil lines can come to life through basic techniques such as Stretch and Squash, and create your own "bouncing ball" animation exercise in this entertaining and fun enrichment program.

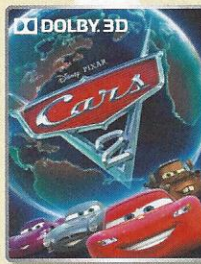
DIVE INTO DJ'ING

4:30 p.m.

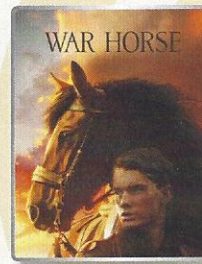
Hop on the turn tables and learn to scratch with Guest DJ Z.

BUENA VISTA THEATRE

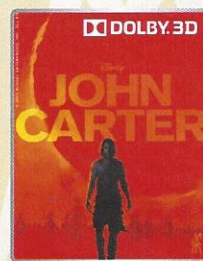
Today's Movies



11:30 a.m.
Run Time: 1 hr 56 mins
Rating: G



4:30 & 7:30 p.m.
Run Time: 2 hrs 26 mins
Rating: PG-13



10:30 p.m.
Run Time: 2 hrs 12 mins
Rating: PG-13



Bring the family out to this interactive dance party featuring The Three Amigos. We will party with Donald Duck, learn Salsa, Meringue and have a Latin good time!

D Lounge,
Deck 4, Midship
10:15 p.m.



MATCH YOUR MATE

It's time to play everyone's favorite couple's game show - Match your Mate!

The Tube (18+),
Deck 4, Aft
10:15 p.m.

YOUTH ACTIVITIES OPEN HOUSE

Open House is an opportunity for all to come and participate in a variety of exciting activities and free time in the Oceaneer Club, Lab, Edge and Vibe throughout the cruise. During these times secured programming will still be offered in the other venue for those looking to check their children into care.

MORE TO ENJOY WHILE ONBOARD

ONBOARD AIRLINE CHECK IN

If you would like to have your boarding passes printed for you onboard and have your luggage taken to the airport for you, register by midnight tonight. If you have Disney Cruise Line airport transfer to Orlando International Airport and fly with one of the participating airlines. Please stop at Guest Services, Deck 3, Midship.

ON DEMAND TV

Watch Disney movies, Hollywood features, ABC Shows, and even captioned content, plus much more "On Demand" for FREE in the comfort of your stateroom! Bookmark your movie and come back to watch it later. Press MENU on your stateroom television remote control, and follow the prompts.

SURF @ SEA

\$0.75 per minute, or save money by buying blocks of time. \$55.00 for 100 minutes, \$100.00 for 250 minutes and \$150.00 for 500 minutes. Wireless information sheets are available at Guest Services, Deck 3, Midship. *Please note: Due to satellite connectivity, onboard internet service will be noticeably slower than you may be accustomed to and may at times be interrupted or unavailable.*



PORT & SHOPPING INFORMATION

Port & Shopping Guides Johan & Marissa will be on the gangway from 8:00 to 9:00 a.m. to answer any last minute Costa Maya shopping questions. Don't forget your Shopping Maps, VIP Cards & Shopping Coupons! Check your shopping maps for all of the shopping events going on ashore today.



CAN'T WAIT FOR YOUR NEXT CRUISE?

Don't wait to book your next cruise! You'll save 10%, receive up to a \$200 onboard credit, and pay a reduced deposit when you book today. Just visit the Future Cruise Sales Desk, Deck 4 Midship, or call 7-2848. Tune to Channel 8 on your stateroom TV for details.

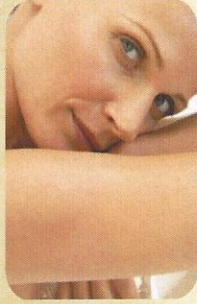


DISNEY VACATION CLUB® GROUP PREVIEW

Want to learn more about taking magical vacations year after year? Please see a Disney Vacation Club representative on Deck 4, Midship, or call 7-2805 from your stateroom phone for more information about our interactive group presentation.



Welcome to Costa Maya, a secluded destination on Mexico's stunning Riviera Maya! The port of Costa Maya is booming and there are many amazing new Port Adventures to choose from. There is limited availability on tours, so stop by the Port Adventures Desk, Deck 5, Midship, to reserve your place. Don't forget to plan ahead for Castaway Cay, where only a few Stingray encounters remain available.



SENSES SPA & SALON

OXYDERMY

Elemis Oxydermy Facial lessens the appearance of fine lines, scars, sun damage, age spots and blemishes. It is collagen boosting and oxygen infusing.


50 minutes \$169

Call Senses Spa & Salon, 7-1465

SHOPPING

DOONEY & BOURKE EXCLUSIVE

Disney Fantasy Inaugural Dooney and Bourke release will be in Sea Treasures, Mickey's Mainsail and Whitecaps today from 3:30 p.m., with a limit of 2 per style, per Guest.



CAPTAIN'S SIGNING

Have your memorabilia signed by the Master of Disney Fantasy, Captain Tom, 7:00 - 8:30 p.m. in Whitecaps, Deck 3 Forward.

DOONEY AND BOURKE RELEASE

Disney Fantasy Inaugural Dooney and Bourke release will be in Sea Treasures, Mickey's Mainsail and Whitecaps today from 3:30 p.m., with a limit of 2 per style, per Guest.

TANZANITE UNVEILING

One time only unveiling of a massive selection of Tanzanite, one of the rarest stones in the world. Discover all new tanzanite designs and styles at exceptional duty and tax free savings, from affordable pendants to luxurious tanzanite rings, in exclusive, one of a kind designs. Whitecaps, Deck 3, Forward, 7:30 p.m.



SHUTTERS DIGITAL PACKAGES

Do you only need a small number of digital images of your photos? We now offer two digital packages where you can choose your selected images in the comfort of your own home! Send them to friends or upload them on social media sites, the choice is yours! Please see one of our friendly Shutters staff to explain this great new product. Your photos will be available for viewing on our interactive kiosks in Shutters Digital as well as in your personal photo folder in Shutters, Deck 4 Midship, Conditions applies.

**Please note that photos are available for viewing on our interactive photo kiosks approximately five hours after being taken and are only available for purchase during this cruise.*

MEET DESIGNER TO THE STARS, BERNARD BACHOURA!

Once in a lifetime opportunity! Last Chance to enjoy one on one time with Hollywood's favorite jewelry designer, Bernard Bachoura. Feel like Hollywood Royalty and let him be your personal jewelry stylist this week. Bernard will help you build your jewelry wardrobe to suit your lifestyle and budget. Bernard will share inspiring stories about designing jewelry from the age of 13, to the inspiration behind Sophia Fiori, and excitement for the history of the blue diamond. Whitecaps, Deck 3, Forward, 5:00 - 8:00 p.m.

Due to port regulations, when the ship is docked, the stores will remain closed.

IMPORTANT INFORMATION

Security Notice

All Guests (including children) who wish to disembark the ship are required to present their Key to the World card at the gangway. A photo ID is also required for those Guests who are 18 years of age or older. Guests under the age of 18 are required to have a Parent, Guardian or other responsible adult sign an authorization form at the time it is given out if they wish to go ashore unaccompanied. Authorization forms are available at the gangways and Guest Services.

Cold and Flu Reminder

Please wash hands frequently and thoroughly, particularly before meals. Contact the Health Center by dialing 7-1923, should anyone in your party become ill.

Corridor Quiet Hours

As a courtesy to all our Guests, please recognize quiet hallway hours from 10:00 p.m. til 8:00 a.m.

Inclement Weather

For the safety of all Guests, outdoor events may be changed due to unforeseen weather conditions.

Environmental Message

With Disney's commitment to the Environment, please refrain from throwing anything over the Ship's side. Thank you!

No Reserved Seats Policy

As a courtesy to all our Guests, we kindly advise that the saving of seats is not permitted in the Walt Disney Theatre, and the saving of the sun loungers is not permitted on Deck 11, 12, and 13. Items left unattended will be returned to lost and found at Guest Services, Deck 3 Midship.

Smoking

For the comfort of our guests the following areas are designated as Smoking areas: - Promenade Deck (Deck 4), smoking is permitted Port Side, Aft only from 6:00 p.m. to 6:00 a.m.
- Currents - Deck 13, Forward, Port Side.
- Meridian Bar - Deck 12, Aft, Port Side, outside.
- Smoking is permitted on stateroom verandahs. Smoking is prohibited inside all guest staterooms. Guests found smoking in their staterooms will be charged a \$250 stateroom recovery fee.

Walt Disney Theatre

Theatrical performances may use artificial fog, strobe lights, pyrotechnics and other special effects. For the safety of our performers and the comfort of those around you, the use of any photography, video recording device or any electronic equipment is prohibited.

Verandah Safety

Please do not leave any combustible materials on your balcony when not present in your stateroom for safety reasons.

DF/BD/7W/001/3 31.12/NCA/©DISNEY

WEDNESDAY, APRIL 4, 2012 - COSTA MAYA

BUENA VISTA THEATRE



11:30 a.m.
Run Time: 1 hr 36 mins
Rating: G



4:30 & 7:30 p.m.
Run Time: 2 hrs 26 mins
Rating: PG-13



10:30 p.m.
Run Time: 2 hrs 12 mins
Rating: PG-13

Character Appearances

REMY
Lobby Atrium - 3:00 p.m.
Lobby Atrium - 7:15 p.m.
Lobby Atrium - 9:45 p.m.

BUZZ LIGHTYEAR
Lobby Atrium - 3:15 p.m.
Lobby Atrium - 8:00 p.m.
Lobby Atrium - 10:00 p.m.

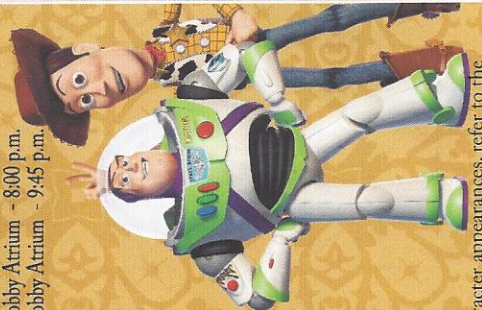
EMILIE
Lobby Atrium - 3:30 p.m.
Lobby Atrium - 7:45 p.m.
Lobby Atrium - 10:15 p.m.

WOODY & JESSIE
Lobby Atrium - 3:45 p.m.
Lobby Atrium - 7:30 p.m.
Lobby Atrium - 9:30 p.m.

PLUTO
Lobby Atrium - 5:00 p.m.

TIMON
Deck 4, Midship Balcony - 5:15 p.m.
Preludes - 8:00 p.m.
Preludes - 9:30 p.m.

GOOFY & MAX
Lobby Atrium - 5:30 p.m.



For details of daily Disney character appearances, refer to the character line on your Navigator Grid, or the digital character board in the Lobby Atrium.

YOUTH ACTIVITIES THEMED EXPERIENCES

- CLUBHOUSE SERIES**
focuses on movement and features content which appeals to younger children.
- STORYBOOK SERIES**
is designed with a strong connection to the Disney classic stories.
- JUMP UPI SERIES**
includes large ground games & movement-oriented activities.
- CREATE & INVENT SERIES**
will have a tactile focus allowing children to create and admire their work.
- IN THE SPOTLIGHT SERIES**
focuses on children's stage presence with lots of activities and enthusiasm.
- SOLVE IT! SERIES**
are less active, but will challenge children with problem/solutions-based activities.
- OUT & ABOUT SERIES**
Set outside secured Youth Activities spaces, very active, appealing to Tweens. Recommended 8 - 14 years

SHIP DIRECTORY

YOUTH ACTIVITIES		RECREATION	
DISNEY'S OCEANEER CLUB	DECK 5, MID	9:00 A.M. - 11:00 P.M.	
DISNEY'S OCEANEER LAB	DECK 5, MID	7:00 A.M. - 12:00 MID.	
EDGE	DECK 13, MID	10:00 A.M. - 1:00 A.M.	
VIBE	DECK 4, FWD	12:00 P.M. - 2:00 A.M.	
IT'S A SMALL WORLD NURSERY	DECK 5, MID	9:00 A.M. - 11:00 P.M.	
AQUALAB	DECK 12, AFT	9:00 A.M. - 7:00 P.M.	
AQUADUCK	DECK 12, MID	9:00 A.M. - 10:00 P.M.	
GOOBY'S SPORTS DECK	DECK 12, AFT	8:00 A.M. - 6:00 P.M.	
DONALD'S POOL	DECK 11, MID	6:00 A.M. - 11:00 P.M.	
GOOFOY GOLF	DECK 13, AFT	8:00 A.M. - 10:00 P.M.	
GOLF SIMULATORS	DECK 13, AFT	10:00 A.M. - 6:00 P.M.	
MIDSHIP DETECTIVE AGENCY	DECKS 2 & 5, MID	9:00 A.M. - 9:00 P.M.	
MICKEY'S POOL	DECK 11, MID	6:00 A.M. - 11:00 P.M.	
MICKEY'S SLIDE	DECK 11, MID	9:00 A.M. - 6:00 P.M.	
NEMO'S REEF	DECK 11, MID	9:00 A.M. - 7:00 P.M.	
PORT ADVENTURES DESK	DECK 5, MID	7:30 A.M. - 10:30 A.M.	
QUIET COVE POOL	DECK 11, FWD	7:00 P.M. - 8:30 P.M.	
SATELLITE FALLS	DECK 13, FWD	6:00 A.M. - 12:00 MID	
SENSES FITNESS CENTER	DECK 11, FWD	6:30 A.M. - 10:00 P.M.	
SPORTS SIMULATORS	DECK 13, AFT	10:00 A.M. - 6:00 P.M.	

GENERAL INFORMATION

ARR-CADE	DECK 11, AFT	24 HOURS
DISNEY VACATION CLUB DESK	DECK 4, MID	5:30 P.M. - 10:00 P.M.
FUTURE CRUISE SALES DESK	DECK 4, MID	8:00 A.M. - 12:00 P.M.
GUEST SERVICES	DECK 3, MID	3:00 P.M. - 10:30 P.M.
MEDICAL HEALTH CENTER	DECK 1, FWD	24 HOURS
PORT & SHOPPING DESK	DECK 4, MID	9:30 A.M. - 11:00 A.M.
PRELUDES	DECK 3, FWD	4:30 P.M. - 7:00 P.M.
SENSES SPA AND SALON	DECK 11, FWD	7:30 P.M. - 8:30 P.M.
SHUTTERS PHOTO GALLERY	DECK 4, MID	5:45 P.M. - 6:30 P.M.
SHUTTERS DIGITAL	DECK 4, MID	8:00 P.M. - 8:45 P.M.
SHOPPING	DECK 4, MID	9:00 A.M. - 10:00 P.M.
BIBBIDI BOBBIDI BOUTIQUE	DECK 5, MID	9:00 A.M. - 9:00 P.M.
MICKEY'S MAINSAIL	DECK 3, FWD	3:30 P.M. - 11:00 P.M.
SEA TREASURES	DECK 3, FWD	3:30 P.M. - 11:00 P.M.
VISTA GALLERY	DECK 4, MID	3:30 P.M. - 11:00 P.M.
WHITECAPS	DECK 3, FWD	3:30 P.M. - 11:00 P.M.

DINNER
Animator's Palate: Prince & Princess
Enchanted Garden: Prince & Princess
Royal Court: Prince & Princess
Dining Times: 5:45pm & 8:15pm

OF THE DAY
Key Lime Margarita (Alcoholic)
Cranberry N-Jito (Non Alcoholic)

WEATHER FORECAST
Wednesday: Partly Sunny
High: 84°F/29°C
Thursday: Partly Sunny
High: 82°F/28°C

Evening Attire: Cruise Casual

DINING & LOUNGES

BRKFEST

CABANAS	DECK 11, AFT	6:30 A.M. - 10:30 A.M.
ENCHANTED GARDEN	DECK 2, MID	7:30 A.M. - 10:30 A.M.
ROYAL COURT	DECK 3, MID	7:30 A.M. - 9:30 A.M.

LUNCH

CABANAS	DECK 11, AFT	12:00 P.M. - 2:15 P.M.
ROYAL COURT	DECK 3, MID	11:30 A.M. - 1:30 P.M.
FILLMORE'S FAVORITES	DECK 11, MID	11:00 A.M. - 6:00 P.M.
LUIGI'S PIZZA	DECK 11, MID	11:00 A.M. - 6:00 P.M.
TOW MATER'S GRILL	DECK 11, MID	11:00 A.M. - 11:00 P.M.

DINNER

ANIMATOR'S PALATE	DECK 3, AFT	5:45 P.M. & 8:15 P.M.
ENCHANTED GARDEN	DECK 2, MID	5:45 P.M. & 8:15 P.M.
ROYAL COURT	DECK 3, MID	5:45 P.M. & 8:15 P.M.
CABANAS CASUAL DINING	DECK 11, AFT	6:30 P.M. - 8:30 P.M.

LATE NIGHT SNACKS

LUIGI'S PIZZA	DECK 11, MID	9:30 P.M. - 12:30 A.M.
LA PIAZZA (18+)	DECK 4, AFT	10:45 P.M. - 11:45 P.M.

ADDED FEATURES

BEVERAGE STATION	DECK 11, MID	24 HOURS
EYE SCREAM	DECK 11, MID	11:00 A.M. - 11:00 P.M.
ROOM SERVICE	DIAL 0	24 HOURS

ENTERTAINMENT - LOUNGES - BARRY

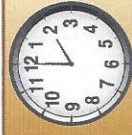
Adults must be 21 and older to consume alcoholic beverages.

BON VOYAGE	DECK 3, MID	9:30 A.M. - 11:00 P.M.
COVE CAFE (18+)	DECK 11, FWD	7:00 A.M. - 12:00 MID.
COVE BAR (18+)	DECK 11, FWD	9:30 A.M. - 10:30 P.M.
CURRENTS (18+)	DECK 13, FWD	10:00 A.M. - 11:00 P.M.
D LOUNGE	DECK 4, MID	SHOW TIMES
FROZONE	DECK 11, MID	11:00 A.M. - 11:00 P.M.
LA PIAZZA	DECK 4, AFT	3:00 P.M. - 12:30 A.M.
MERIDIAN (18+)	DECK 12, AFT	5:00 P.M. - 12:30 A.M.
O'GILLIS PUB	DECK 4, AFT	3:00 P.M. - 1:00 A.M.
OUTLOOK	DECK 14, MID	SUNSET
Ooh LA LA (18+)	DECK 4, AFT	5:00 P.M. - 1:00 A.M.
SKYLINE (18+)	DECK 4, AFT	4:30 P.M. - 1:00 A.M.
THE TUBE (18+)	DECK 4, AFT	10:00 P.M. - 2:00 A.M.
WAVES	DECK 12, AFT	10:00 A.M. - 6:30 P.M.
VISTA CAFE	DECK 4, MID	7:30 A.M. - 10:00 P.M.

Consumers who order raw or partially cooked, ready-to-eat food of animal origin, are hereby informed that the food is not sufficiently cooked to ensure its safety.

TIME ZONE CHANGE

Remember to turn your clocks **FORWARD 1 HOUR** upon retiring on **WEDNESDAY** evening, or first thing **THURSDAY** morning.



All Ashore: Approx. 7:30 a.m.

All Aboard: 2:30 p.m.

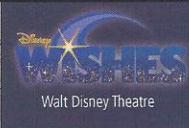
SHIP'S AGENT IN COSTA MAYA IMPORTANT NUMBERS

Sr. Marco Souza
Carmichel, Coordinator General,
Aconsur, Mahabual, Q. Roo, México
Tel: 52 983 45674 or 521 9837005253



Fire/Security: 7-3001
Medical Emergency: 7-3000
Health Center: 7-1923

	8:30	8:45	9:00	9:15	9:30	9:45	10:00	10:15	10:30	10:45	11:00	11:15	11:30	11:45	12:00	12:15	12:30	12:45	1:00	1:15	1:30	
FUNNELVISION	Monsters Inc. (G) FunnelVision						Toy Story 2 (G) FunnelVision						Jamfest at Sea FunnelVision									
MOVIES	Cars 2 (G) DOLBY 3D Buena Vista Theatre																					
CHARACTER																						
FUN FOR ALL AGES	Board Games Available O'Gills Pub																		Jamfest at Sea Deck Stage			
ADULTS	Boot Camp (Fee Applies) Senses Fitness Center																					
ADULTS	Friends of Bill W. Outlook																					
Vibe																Hangin' in Vibe						
Edge	Open House									Craft Time												
Oceaneer Lab	Super Sloppy Science - Eggsperiments																					
Oceaneer Lab	Open for Secured Programming																					
Oceaneer Lab	Wii Challenge																					
Oceaneer Club	Memory Wall																					
Oceaneer Club	Tinker Bell's Talent Show																					
Oceaneer Club	Youth Lunch																					
Oceaneer Club	Magic Playfloor																					
Oceaneer Club	Parachute Games																					
Out & About	Open House in Edge						Fitness Frenzy Senses Fitness Center															

Symbol for activities that will be repeated during the cruise

	1:45	2:00	2:15	2:30	2:45	3:00	3:15	3:30	3:45	4:00	4:15	4:30	4:45	5:00	5:15	5:30	6:45	6:00	6:15	6:30	6:45	
FUNNELVISION	Ratatouille (G) FunnelVision						Lemonade Mouth (G) FunnelVision															
MOVIES	War Horse (PG-13) Buena Vista Theatre																					
CHARACTER	Remy Lobby Atrium		Buzz Lobby Atrium		Emille Lobby Atrium		Woody Lobby Atrium		Pluto Lobby Atrium		Timon Dk 4, Midship		Goofy Lobby Atrium		Lilo & Stitch Dk 4, Midship							
FUN FOR ALL AGES	Mickey 200 (Limited Availability) The Tube				Bingo Pre Sales				\$5,000 MEGA Jackpot BINGO D Lounge				Live Piano with Charlie Reuter Lobby Atrium				 Walt Disney Theatre					
FUN FOR ALL AGES	Chip it Golf (12+) Lobby Atrium				Conversation with Joe Lanzisero Buena Vista Theatre				Disney Vacation Club Presentation The Tube													
ADULTS	Anyone Can Cook D Lounge - Sea Bass						How to Increase Your Metabolism Senses Spa and Salon															
ADULTS	Facial Workshop O'Gills Pub				Acupuncture: Pain Management Senses Spa and Salon				Power Stretch Senses Fitness Center													
Vibe	Disney Animation: Cartoon Physics										Dive into DJ'ing											
Edge	Anyone Can Cook - Pizza						Ultimate Scavenger Hunt															
Oceaneer Lab	Gaga Ball				Magic Show				Open House				Youth Dinner				Go Fetch					
Oceaneer Club	Puzzle Playtime				Once Upon a Time								Picture This									
Oceaneer Club	Open House																					
Out & About	Basketball Challenge																					

Fold along the dotted lines and take me with you so you don't miss any of the fun!

	7:00	7:15	7:30	7:45	8:00	8:15	8:30	8:45	9:00	9:15	9:30	9:45	10:00	10:15	10:30	10:45	11:00	11:15	11:30	11:45	12:00	
FUNNELVISION	Enchanted (PG) FunnelVision						High School Musical 3 (PG) FunnelVision															
MOVIES	War Horse (PG-13) Buena Vista Theatre																					
MOVIES	John Carter (PG-13) DOLBY 3D Buena Vista Theatre >12:42 a.m.																					
CHARACTER	Tiana Dk 4, Midship		Mickey Lobby Atrium		Belle Dk 4, Midship		Minnie Lobby Atrium		Jessie Lobby Atrium		Remy Lobby Atrium		Buzz Lobby Atrium		Emille Lobby Atrium							
FUN FOR ALL AGES	Captain's Signing Whitecaps >8:30 p.m.		Cabaret: Taylor Mason The Tube				 Walt Disney Theatre				Family Karaoke D Lounge		 D Lounge		Family Karaoke D Lounge							
FUN FOR ALL AGES	Bingo Pre Sales		Double-Up Jackpot Bingo D Lounge				Officer Pin Trading Lobby Atrium				Live Piano with Charlie Reuter Lobby Atrium											
ADULTS	St. Paddy's Celebration O'Gills Pub						Match Your Mate The Tube						London Rocks The Tube		Guest DJ Z The Tube							
ADULTS	Live Music with "The Dreamers" La Piazza						Live Music with "The Dreamers" La Piazza						Live Music with "The Dreamers" La Piazza									
Vibe	ESPN Dream Team Draft Day				Smoothie Hour				Pump it Up!				Hangin' in Vibe				> 2:00 a.m.					
Edge	Gaga Ball						That's Hilarious						Chillin' in Edge				> 1:00 a.m.					
Oceaneer Lab	Anyone Can Cook - Cupcakes																					
Oceaneer Lab	Disney Animation: Creating a Character																					
Oceaneer Lab	Gaga Ball																					
Oceaneer Club	Play Doh Creations						Pluto's PJ Party						Movie Time									
Oceaneer Club																						
Out & About	Shuffleboard Tournament																					

OUT & ABOUT SERIES
JUMP UP! SERIES
CREATE & INVENT SERIES
CLUBHOUSE SERIES
STORYBOOK SERIES